

WS-8700/DDL-9000B

AUTOMATIC POCKET SEWING MACHINE



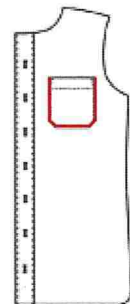
Novel and unique device

- A perfect product quality is created by adopting the nonrecurring completion process of folding and sewing.
- It is provided with rapid mode changing function and the sewing route can be automatically generated by importing the CAD curve.
- The pocket shape for sewing (round angle, right angle and oblique angle) can be set randomly, and the material will be automatically collected upon sewing completion so as to meet the production requirements.
- The transition technology of air cushion is adopted for fabric feeding to ensure an accurate and stable feeding.



Work efficiency

- Automatic edgefolding and stitching of shirt pocket can reach about 2200 pieces/ 8 hours(sewing speed: 3000rpm, stitch length: 2mm; fabric taking speed: 1000mm/s;pocket shape: rounded angle ;pocket width: 1100mm; pocket height: 130mm; radius of the rounded angle: 25mm;reinforced stitching number of back stitch: 0 stitch;reinforced type: triangle; reinforced width: 25mm)



MAIN SPECIFICATION

Head installation	DDL-9000B-MS lockstitch sewing machine
Maximum sewing speed/rpm	300
Stitch length/mm	1-3
Cloth feeding mode	servo cloth feeding in X/Y direction
Sewing scope/mm	X=80-175 and Y=80-150
Operating voltage/V	220
Operating air pressure/Mpa	0.5
Machine size/mm	1700L×1500W×1450H
Machine weight/kg	400
Air consumption/L/min	200

